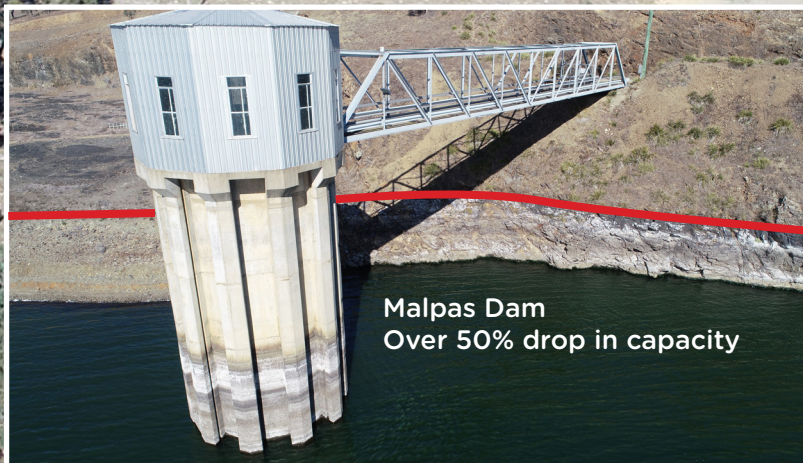


Council News

Winter 2019 edition

Water crisis continues for the Armidale region



Malpas Dam
Over 50% drop in capacity

[Water saving tips](#)

[Operational Plan and Budget snapshot](#)

[2019/20 Capital Program](#)

[Galloway kids lead way in sustainability](#)

[Receive your rates notice via email](#)

[New signs for faster emergency responses](#)

Message from the Mayor

It is with some sadness that we say farewell to the Tingha community as they move from the Armidale Regional Local Government area to the Inverell Shire from 1 July 2019. This was a decision made by the majority of the Tingha community and for good reason. Tingha kids go to school in Inverell, water comes from Inverell, they do their shopping in Inverell, and for a lot of people it's their real community of interest. On behalf of the Armidale region we wish Tingha every success for the future and as a member of the New England Joint Organisation will continue to advocate and support the New England region.



Water or lack of it is never far from peoples minds as the long drought continues to bite in our region. Guyra has moved to level 5 emergency water restrictions with Armidale remaining on level 4. Water cartage has also commenced from Armidale's water treatment plant to Guyra to ensure there is a water supply to the town.

This is a crisis never before experienced in our region and water supplies are at critical levels. Malpas Dam, Armidale's water supply is now

at 48.8 percent and on current water consumption will run out in a year. The dam is now supporting Guyra and many rural properties whose tanks are now dry and require water cartage supplied from the town water supply.

There are many people in our region who are complacent about our water supply and believe that 48.8 percent is more than enough to see us through. To put this into perspective Tamworth's Chaffey Dam holds 100 gegalitres and is currently at 20.8 percent capacity and has approximately one year of water consumption left servicing a population of 75k and extensive industry. Malpas Dam holds only 13 gegalitres and is currently at 48.8 percent capacity servicing a population of approximately 30k and some industry. Malpas Dam also only has about one year's water supply left.

Everyone must do more to conserve water now to ensure we reach a target of 160 litres per person per day. Our current usage per person is hovering around the 222 litres per person per day, well over the national average of 194 litres per person per day. This equates to saving about 35 litres per person per day. This is our challenge to the community. We need to conserve water and change our views on water

forever to be inline with the rest of the country that actively practices water conservation everyday.

Consultation is currently underway to seek feedback from the community on our libraries in Armidale and Guyra. Council is planning to transform these spaces into contemporary and dynamic spaces for the community and we want your ideas and information about how you currently use the spaces. Visit our [yoursay.armidale](http://yoursay.armidale.nsw.gov.au) online engagement hub to participate in this important consultation.

Lastly it is very exciting to announce the Armidale Airport Business Park stage 1 72 lot sub division is now open for business with numerous lots available for purchase. Thanks to \$6million funding from the NSW Government and \$500k from Council this project will be a key driver for economic stimulus in the Armidale region. The marketing agent is receiving numerous enquiries and we are confident of selling lots soon. Construction of roads and the installation of the NBN are expected to commence in October this year.

Simon Murray
Mayor

Leak monitoring completed in Guyra

Hidden water leak monitoring in the Guyra town water supply system has been completed in the latest measure to address the tightening water shortage.

Council engaged specialist contractor Detection Services to identify and locate hidden leaks in Council's treated water network in the Guyra district.

"Not all water leaks are visible on the surface, so the inspections looked for any hidden leaks in Council's water distribution network," Armidale Regional Council Mayor Simon Murray said.

The network comprises a total of about 49 kilometres of pipeline in



Specialist contractor Detection Services investigate the treated water network in Guyra for leaks

Guyra, starting at the water treatment plant north of the Guyra township and including two reservoirs on Prisk Hill.

Detection Services completed visual

and acoustic monitoring of the water pipe network. It also supplied and installed flow meters at the Prisk Hill reservoirs' outlets to monitor minimum night flows.

Level 4 water restrictions

Continue for residents of Armidale

The forecast is for continued below average rainfall.

Dams are at the lowest levels experienced in our region for 40 years.

We must act and conserve water now.

Level 5 water restrictions

Now in place for town water users in Guyra



Water saving tips

For more information go to www.armidaleregional.nsw.gov.au

Place a bucket in the shower while waiting for hot water or in the sink when you go to wash up

You can then use that water to water plants in the garden, water for pets or use it to brush your teeth.

Save 50L of water when you reduce your washing by one load a week

Washing machines account for 16% of all water used inside the average home. Reducing your washing by just one load a week could save almost 2,600L each year!

Install a water efficient showerhead

A standard (non water efficient) showerhead uses 12 - 22 litres per minute. A water saving showerhead (** WELS rated) uses 9 litres per minute or less. Stick to a 4 minute shower or less and you could save up to 70 litres on an average 7 minute shower using a non water efficient showerhead.

Regularly recording your water meter reading is a great way to monitor your water consumption and can help you to discover leaks.

Locate your water meter on your property and take a reading. 24 hours later take another reading. Council has a simple 'How to read your water meter' instructions on the council website.

Plug the sink or use a bowl when you're washing vegies

Running taps contribute to water waste, running the tap to rinse fresh produce can use up to 10L of water per minute! Avoid unnecessary waste by putting a plug in the sink or using a bowl when cleaning fruit and veg. The water you collect can be used on your garden.

Repair any leaking toilets and use the half-flush

Using the half flush can save up to 80 litres of water per day

Turn off the tap when brushing teeth or shaving

A running tap can use 10 litres of water per minute

Per household our water consumption is about 30% more than NSW and 15% more than the national average.



By implementing the simple water saving tips above we can reduce our consumption and aim for a target of:

160

litres per person per day
That's only 62 litres a day or approx. 6 standard buckets!

Operational Plan & Budget snapshot

Council has adopted its 2019/20 Operational Plan and Budget for the region, following a period of community consultation.

Council's adopted 2019/20 plans are available from our website www.armidaleregional.nsw.gov.au

Highlights include a \$38m capital program that incorporates over \$10m in expenditure on local roads and bridges.

The following key initiatives are planned to be delivered in the 2019/20 financial year:

- \$3.25m regional airport business

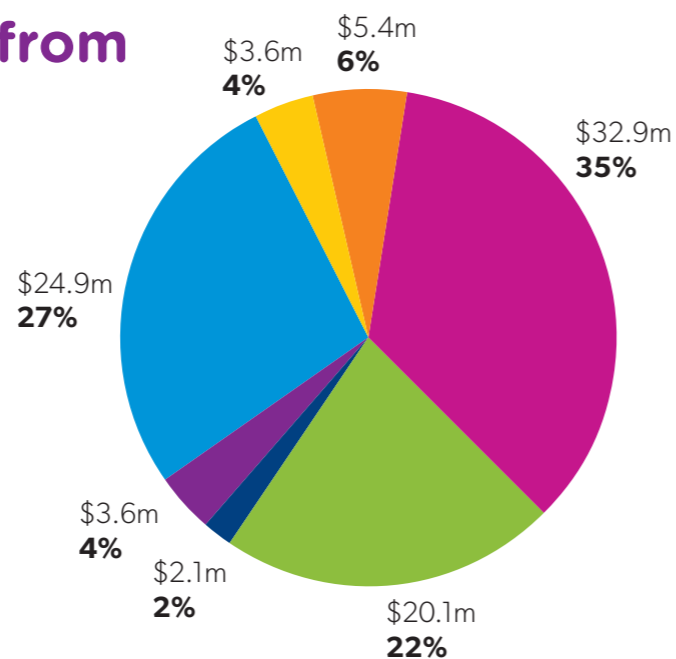
- park development
- \$1.3m Kempsey Road upgrade (Big Hill section)
- Smart Parking strategy to improve availability of parking in Armidale CBD
- Phase 2 of ARDi autonomous vehicle trial
- Villages & Stakeholder Engagement Plan for effective consultation with communities throughout the region
- Armidale Masterplan 2036 to align Dumaresq Creek Masterplan and other land use strategies for the

- city of Armidale
 - 21st Century libraries strategy
- Council is also continuing to work towards meeting the Fit for the Future targets set by the NSW Office of Local Government.

A key achievement in the 2019-20 budget is a forecast for an Operating Surplus, which is a key financial sustainability indicator. More information on Council's historical and forecast financial performance can be found in the 2019-2020 Resourcing Strategy.

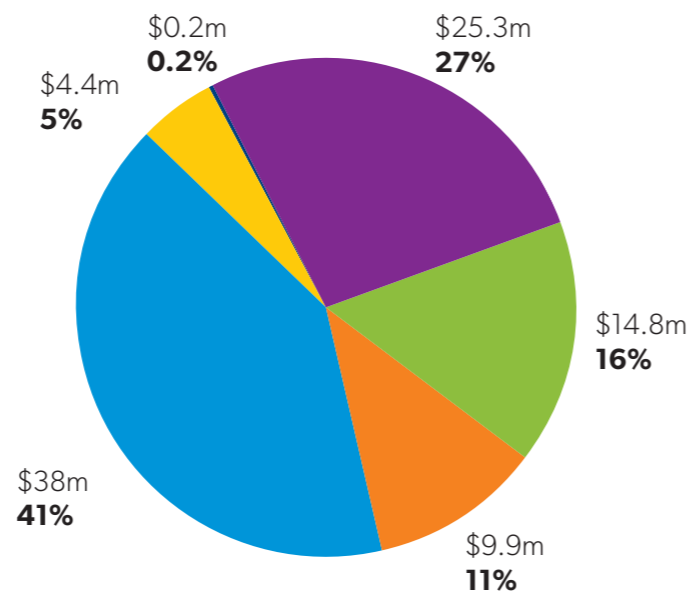
Where the money comes from \$92.6m

- Rates and annual charges
- User charges and fees
- Interest revenue
- Other revenues
- Grants and contributions
- Sale of assets
- Transfer from cash reserves



Where the money goes \$92.6m

- Operating and employee costs
- Materials and contracts
- Other expenses
- Capital expenditure
- Loan repayments
- Transfer to cash reserves

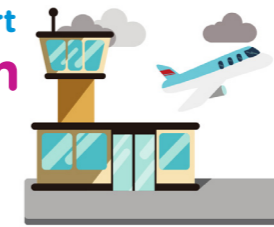


2019/20 Capital Program - \$38m

Plant and equipment
\$3.3m



Airport
\$8.67m



Waste
\$880k



Property and facilities
\$400k



Parks, gardens and cemeteries
\$340k



Bridges
\$1.31m



\$370k

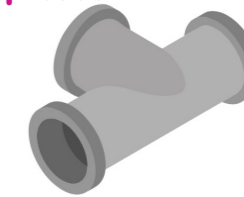
Other

Roads
\$8.81m



Stormwater drainage
\$240k

Sewer infrastructure
\$4m



Water infrastructure
\$9.71m



2019-2020 rates and annual charges

General rates across the region have increased by 2.7% in the 2019-20 financial year in accordance with the rate peg determined by the Independent Pricing and Regulatory Tribunal (IPART).

Annual charges are not subject to the rate peg and have been set in accordance with the estimated cost

to provide services.

Harmonisation of services and charges is continuing in order to establish equity and consistency across the region. A key area of focus for harmonisation in the 2019-20 financial year is the harmonisation of waste charges and services.

Rate peg
2.7%

Rate peg is determined by the Independent Pricing and Regulatory Tribunal (IPART) for 2019/20.

Changes to Guyra Domestic Waste Collection Services

Domestic waste and recycling 140 litre services were harmonised on 1 July 2019 with the commencement of the City to Soil fortnightly service in the Guyra area. This will result in a rollout of a new green bin, kitchen caddy and compostable bags to all Guyra properties that currently receive a domestic waste collection.

The 140 litre domestic waste service across the region will be \$390 in the 2019-20 financial year and the current 240 litre domestic

waste service available in Guyra will be gradually phased out. Residents who currently receive the 240 litre service can opt to downsize to a 140 litre bin and associated lower charge.

Domestic waste management charges for vacant land and rural waste management charges continue to be harmonised in the 2019-20 financial year. Council will also be rolling out more collection services in rural areas as part of an ongoing strategy to improve waste services.



Water trucks to safeguard Guyra supply

Treated water is being trucked to the Guyra water treatment plant from to prolong the town's dwindling supply until the Malpas Dam pipeline is operating.

Council has contracted trucking company SRH Milk Haulage to transport water from the Armidale Water Treatment Plant, as levels in the Guyra

dams sit at less than 24% this week. Trucks will initially deliver 1.2 megalitres of water each week to the Guyra treatment plant, supplementing the town water supply to households and commercial customers.

The Malpas Dam to Guyra pipeline is being fast tracked for completion in mid August and will enable Council to

supplement Guyra's supplies during extended dry periods,

However, it became clear Guyra's current water shortage, and the town's rate of consumption, will leave the town without water before the pipeline is completed and fully operating.

What's on Highlights

Parched - A community benefit concert for regional drought relief - 9 Aug 2019

Musicians of sister schools PLC Armidale and PLC Sydney present a community benefit concert for regional drought relief. Time: 7.30pm
Venue: Lazenby Hall, UNE
Tickets \$25pp adults and \$15pp children/concession
purchase tickets online www.trybooking.com.au/BDHQU
Enquiries PLC Armidale 02 6770 1700

Musica Viva: John Bell & Simon Tedeschi - 31 Aug 2019

VENUE: Town Hall, 127 Rusden Street.
TIME: 7.00pm. COST: \$45 (adult), \$35 (concession), \$25 student - available at www.trybooking.com/ZQSN.

For more information/booking (credit card or in person), phone 02 67688 2135.

Duval Dam Buster Trail Run - 22 Sep 2019

Start/Finish - Picnic area, Dumaresq Dam, off Booroolong Road (on right, approximately 12km west from Armidale).
TIME: timeline for all events will be posted once registrations open.

All competitors must complete the course by 2.00pm.

For more information, visit www.duvaldambuster.com.au/contact

For more events go to www.armidaleregional.nsw.gov.au/events

Rural Financial Counselling Service

The drought conditions currently being experienced across the New England North West region are placing extreme financial and emotional strain on our farmers and regional communities. A Rural Financial Counselling service is available in Armidale, contact Deborah Maddox, Phone: 02 6778 4784 or Mobile: 0408 936 268
Email: armidale@rfcsnr.org.au www.rfcsnr.org.au/counsellors/armidale/

Receive your rates notice via email

Council is offering electronic notice delivery from July 2019. Details on how to sign up for eNotices are contained on your rate notice and in the enclosed brochure.

By signing up for eNotices you will no longer receive printed rates and water notices and will receive them by email instead.

The advantages of receiving your notices electronically include:

- Reduced impact on the environment
- Quicker delivery of notices
- More secure method of delivery

You will be able to access all your notices online once you sign up from 1 July 2019.

Council is continually working on ways to improve and where we can send you other documents electronically we will do so.

Chance to buy pre-loved books

The Armidale region's libraries perpetually review their collections, identifying books and other materials no longer required to meet the needs of the community and freeing up space to refresh the shelves with new arrivals.

Now those items deemed surplus to community needs are available to buy at Armidale Regional War Memorial Library. Book lovers can pick up some great finds that have been cherished by library users but, for a variety of reasons, are no longer a required part of the libraries' collections.

"Like libraries around the world, our library professionals use standardised criteria to identify whether books, digital and visual materials are still relevant to the community," Librarian Jennifer Watson said.

"Is the book still up to date and accurate with its information, is it still of interest in modern society or has the item been superseded by an updated version? These are all questioned asked when items are assessed by library team members, who also consider how long it has been since the item was last borrowed.

"At the same time, it is recognised

we all have our own very personalised tastes and a rare find can often be the greatest treasure for a library user. For that reason, the criteria also includes whether the item is available from other libraries and can be borrowed through an inter-library loan."

The Armidale region's libraries have an exceptional collection of around 80,000 books, digital and visual materials and we are very proud and committed to maintaining such a comprehensive and high-quality collection.

Items on display in the libraries are just part of the collection, with many more items on call. However, there is limited space to store and properly care for those resources, and it's essential the collection keeps pace with changes in what people need to access and what they like to consume.

Galloway kids lead way in sustainability

Galloway Children's Centre pre-schoolers have claimed a trifecta in the 2019 waste>art & design competition, after winning the People's Choice Award.

More than 150 visitors voted for their preferred art work in this year's competition, and the Galloway children's creation was a clear favourite.

Their entry, From this to this, won the Preschool Category and was awarded the Northern Inland Regional Waste InspireUs award. The children created two landscapes from recycled materials that show what happens when you care for the environment versus the results of climate change and the effects of drought.

Galloway has been working hard on developing and implementing an Environmental Strategy over the past 12 months, providing meals to reduce lunch box waste, composting scraps and using biodegradable nappies and bin liners, as well as operating a worm farm.



Galloway Children's Centre pre-schoolers claimed a trifecta in the 2019 waste>art & design competition

In response to water restrictions currently in place for Armidale and Guyra town water customers, staff and children have been reading stories about being more water wise and how to save and recycle water.

Congratulations to all entries and the winners in this year's competition:

- Preschool category winner: Galloway Children's Centre

- Primary School category winner: Martins Gully Kindergarten
- Secondary School category winner: BackTrack
- Community category winner: Phoebe Hillard
- Community category Runner-Up: Berdin Warne
- Community category Runner-Up: Liam Thorsteinsson

New signs for faster emergency responses

Rural property owners in the Armidale Region are being encouraged to display address signs so their location can be easily identified during emergencies.

Council recently introduced the double-sided reflective signs, displaying property names and numbers, to better identify properties and assist emergency service providers. The signs use a nationally recognised addressing system and are visible in both directions, and in the dark.

Councillor Libby Martin put forward a Notice of Motion to the December 2018 Council Meeting, for Council to encourage rural residential landowners to install and display house numbers to identify their location.

Cr Martin said an alarming number of rural properties have unclear or a lack of signage at property entrances and many are not visible from the road or in the dark.

"This is particularly concerning for emergency services trying to identify

properties during times of distress," she said.

The rural address number is based on a measured distance, usually from the beginning of a road, with the number rounded to the nearest odd number for access points on the left side of the road or nearest even number for access points on the right.

Mayor Simon Murray has purchased a sign for his rural property and said "it's crucial for emergency services such as ambulance and fire to be able to locate properties easily to prevent delays and potential for disasters".

"Accidents happen on rural properties more regularly than they should and on many occasions there have been delays with emergency services getting to the scenes simply because they can't locate a property," Cr Murray said.

Property owners have already started to purchase the double-sided blue reflective signs and the first signs will be

erected at these properties in coming weeks.

The University of New England is also implementing the addressing system at their residential colleges following a near death incident involving a student in July 2017. Since then, the university and emergency management teams have been working to find a solution for improved signage to avoid a similar incident.

Council is offering rural residents the opportunity to purchase the signs for \$300, including installation. Application forms are available on Council's website or at its Armidale and Guyra offices.



Council meetings

The general public is welcome to attend any Armidale Regional Council meeting:

- Wednesday 28 August 2019, 4pm in Armidale
- Wednesday 25 September 2019, 4pm in Guyra
- Wednesday 23 October 2019, 4pm in Armidale

Please note: workshops and closed sessions (in private) are not open to the public.



Live Streaming

Council meetings are now streamed live on our youtube channel or via our website!

Participate at a Council meeting

Public access is available for members of our community to voice their opinion on an issue at Council.

Public access will only be granted for items listed on the agenda.

Each address will be limited to a maximum of two (2) speakers for and two (2) speakers against the agenda item.

The address is to be no longer than five (5) minutes.

How to apply

Requests must be submitted by 12 noon on the day prior to the meeting.

A form is available on our website under 'Participate at a Council Meeting'

New roundabout smells of roses

Volunteers from the local Australian Garden History Society are making a rosey difference to the newly established roundabout on the New England Highway.

The Australian Garden History Society has embarked on a project to install a sustainable drought resistant garden by planting 160 roses in the centre of the roundabout.

Armidale Regional Council Mayor Cr Simon Murray said the Garden History Society approached Council to create the rose garden and link it with the magnificent heritage rose garden the society has completed at the National Trust Saumarez Homestead.

"The garden has been designed to showcase plants that thrive in our climate and survive in drought-conditions," said Cr Murray.

"The altitude, climate and soil of Armidale make it ideal for rose growing and the combination of decorative gravel mulch will contribute to efficient water saving techniques."

The Rugosa rose will feature at the roundabout and is eminent for its low

maintenance needs, toughness and glorious long lasting flowers. The roses will be accompanied by scoria gravel mulch as it doesn't absorb moisture and instead, promotes moisture to move directly down into the soil.

The region has long been recognised for its roses with many local rose gardens opening to the public. The nearby Saumarez Homestead has a magnificent display of roses in their heritage rose garden, which is also established and maintained by Australian Garden History Society.

The local gardening group has been working over several weekends to develop the garden. The roses will be watered at the time of planting and minimally after using raw water from a nearby catchment.

Armidale Regional Council and Australian Garden History Society would like to thank Back Track Boys, Black Mountain Nursery, Ducats, Armidale Pumps & Irrigation, Roads & Maritime Services and John Hiscox for their generous support throughout the project.



Armidale Regional Council Mayor Simon Murray with Garden History Society volunteers and Back Track boys. (L-R) Helen Oates, Lynne Walker, Chris McCormack, Beau Parker, Richard Bird, Cr Murray, Sharn Woolnough, Brady Morris and Jack Ackling.

Contact Us



Call: 1300 136 833

Email: council@armidale.nsw.gov.au

Visit a Customer Service Centre @

135 Rusden St, Armidale or
158 Bradley St, Guyra

Follow us



Council's E-NEWS

Join over 4000 community members and subscribe today on the homepage of our website, www.armidaleregional.nsw.gov.au

Online customer self service portal

Did you know that Council has an online customer self service portal?

And that it works on any device including your phone? Just look for the 'Self Service' link on our website to find out what you can do online. Popular online services include:

- Certificates: apply and pay for copies of certificates
- Payments: pay your rates, water, sundry debtors and development

applications

- Planning Enquiry: enquire on development applications or property information
- Register: access your rates and water information and set up direct debit payments
- Report It/Request it: submit customer service requests
- Change of Address: change your postal address

Want to have your say?

Register now at yoursay.armidale.nsw.gov.au