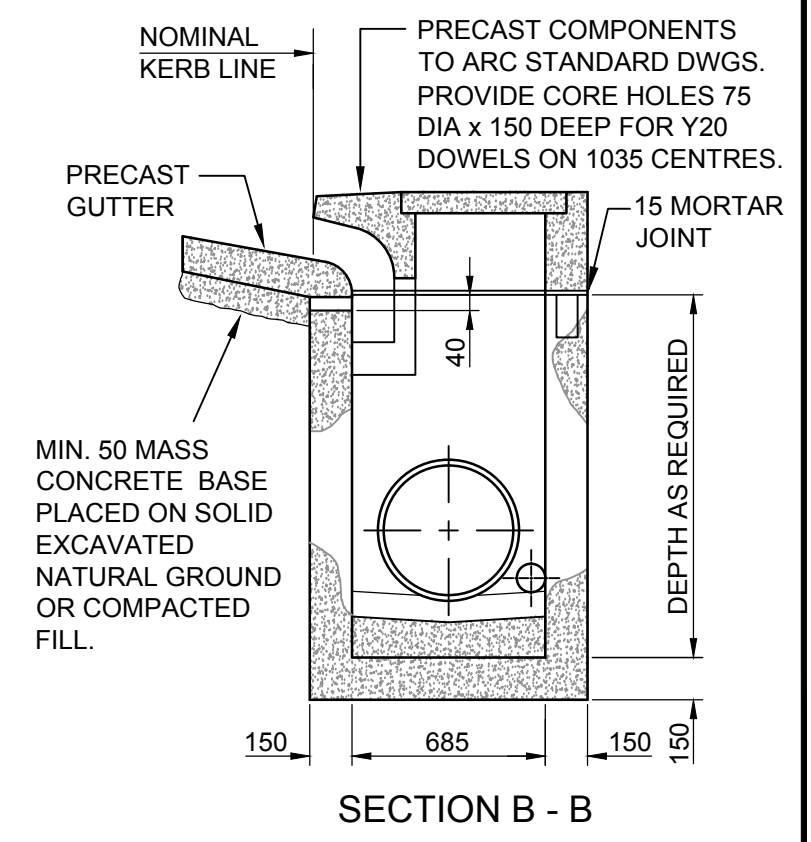


DETAIL OF STEP IRON
 STEP IRON OF 20 GALVANIZED STEEL MADE TO ABOVE SHAPE AND DIMENSIONS SHALL BE PROVIDED AT 450 CTS. UNDER LID WHERE PIT IS DEEPER THAN 1200.



- NOTES**
1. ALL MEASUREMENTS ARE IN MILLIMETERS.
 2. COMPRESSIVE STRENGTH (F_c) FOR CAST IN SITU CONCRETE TO BE A MINIMUM OF 32MPa AT 28 DAYS.
 3. PRECAST GUTTERS ARE MANUFACTURED FOR GUTTER FLOWS FROM LEFT OR RIGHT HAND DIRECTIONS.
 4. Ø100 SUBSOIL DRAINAGE PIPE 3000 LONG WRPD. IN A FABRIC SOCK TO BE PROVIDED AJCT. TO INLET PIPES.
 5. MULTIPLE LIDS MAY BE USED TO SUIT SITE OR TO INCREASE INLET CAPACITY.
 6. PROVIDE SL92 MESH CENTRALLY PLACED TO WALLS AND BASE FOR PITS ≥ 1.5m DEEP PLUS Y12 STARTER BARS SPACED AT 150 C/C.
 7. ALL STEELWORK SHALL BE HOT DIP GALVANISED IN ACCORDANCE WITH AS 1650.

Armidale Dept of Public Regional Council Infrastructure	SCALES NTS	APPROVED D. MAUNDER MANAGER ENGINEERING AND STANDARDS SUPPORT	31/08/2016 DATE	SHEET 1 OF 2
	REAR ACCESS GULLY PIT PIPES UP TO Ø600 (RM5)	SURV DRWN JB DES CHKD MW	AS SHEET SIZE A3	DRAWING No 080-031
		CADFILE 080-031_1.dwg		DATE 31/08/2016