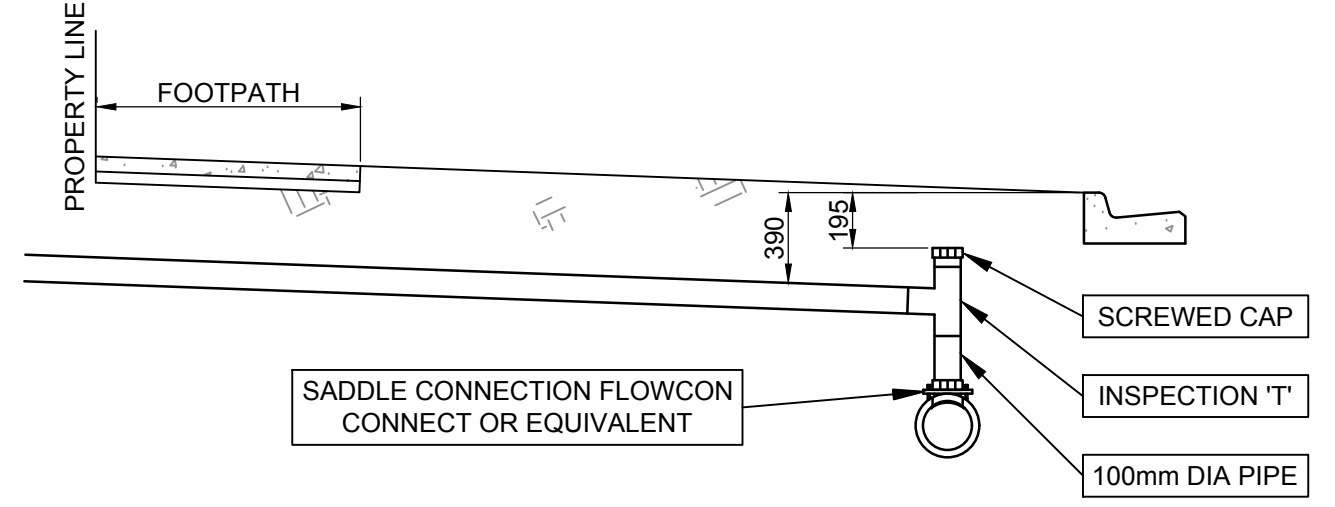
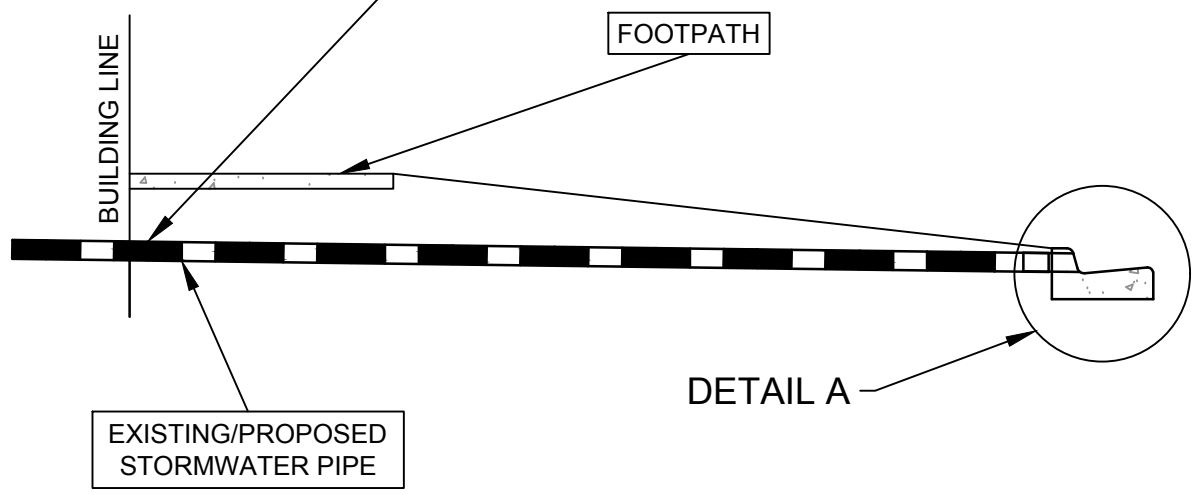


PLAN



SECTION VIEW
DIRECT CONNECTION TO PIPE INSTALLATION

CONNECT 100mm PVC (SEWER GRADE SN10) PIPE INTO EXISTING/PROPOSED PIPE AT BUILDING LINE WITH A PRIORITY ADAPTOR.

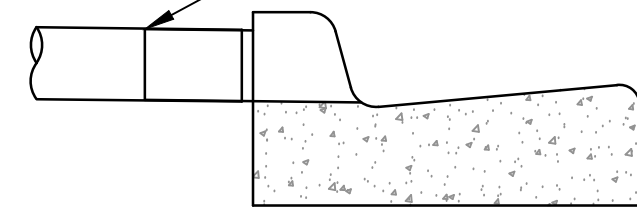


SECTION
KERB INSTALLATION

NOTES: PIPE CONNECTION INSTALLATION

1. ALL PIPES AND FITTINGS ARE TO BE PVC SN10.
2. ALL SOLVENT ADHERED JOINTS MUST BE COMPLETED AS PER THE MANUFACTURERS RECOMMENDED INSTRUCTIONS.
3. RCP STORM WATER PIPE TO BE CORED OR DRILLED TO CREATE OPENING. CUT SURFACES TO BE EXPOXY SEALED TO PREVENT CORROSION OF STEEL REINFORCEMENT.
4. THE PROPERTY STORMWATER DRAIN IS TO EXTEND 500mm INTO THE PROPERTY.
5. THE FOOTPATH AND BACK OF KERB ARE TO BE STAMPED WITH 'SW' TO INDICATE THE LINE OF THE PROPERTY STORM WATER DRAIN .

100mm TO 90mm STORMWATER ADAPTOR WHEN CONNECTING TO EXISTING/PROPOSED KERB.



DETAIL A

NOTES: KERB INSTALLATION

1. FOR SINGLE PIPE INSTALLATION CONNECT PIPE TO KERB VIA APPROVED KERB ADAPTOR. CURRENTLY RECYCLE RUBBER OR CAST ALUMINIUM.
2. FOR DUAL PIPE INSTALLATIONS SEPARATE PIPES BY A MINIMUM 300mm AND CONNECT TO KERB VIA KERB ADAPTORS.
3. FOR MORE THAN TWO PIPES A PURPOSE BUILT GALVANISED STEEL KERB ADAPTOR IS REQUIRED. DESIGN THE OPENING SPAN TO ACCOMMODATE A WHEEL LOAD. MATCH PROFILE OF KERB. ROUND ALL EDGES, NO SHARP EDGES OR CORNERS PERMITTED.
4. FOR ALL OPTIONS SAW CUT KERB MINIMUM 25mm WIDER EITHER SIDE OF ADAPTOR. REINSTATE KERB WITH HIGH STRENGTH CEMENT MORTAR/CONCRETE.

Armidale Dept of Public Regional Council Infrastructure	SCALES NTS	APPROVED D. MAUNDER 31/08/2016 <small>MANAGER ENGINEERING AND STANDARDS SUPPORT</small>	SHEET 1 OF 1
		SURV DRWN ST DES MW CHKD MW	AS SHEET SIZE A3
PROPERTY STORMWATER CONNECTION TO KERB AND PIPE		CADFILE 080-027.dwg	DATE 31/08/2016