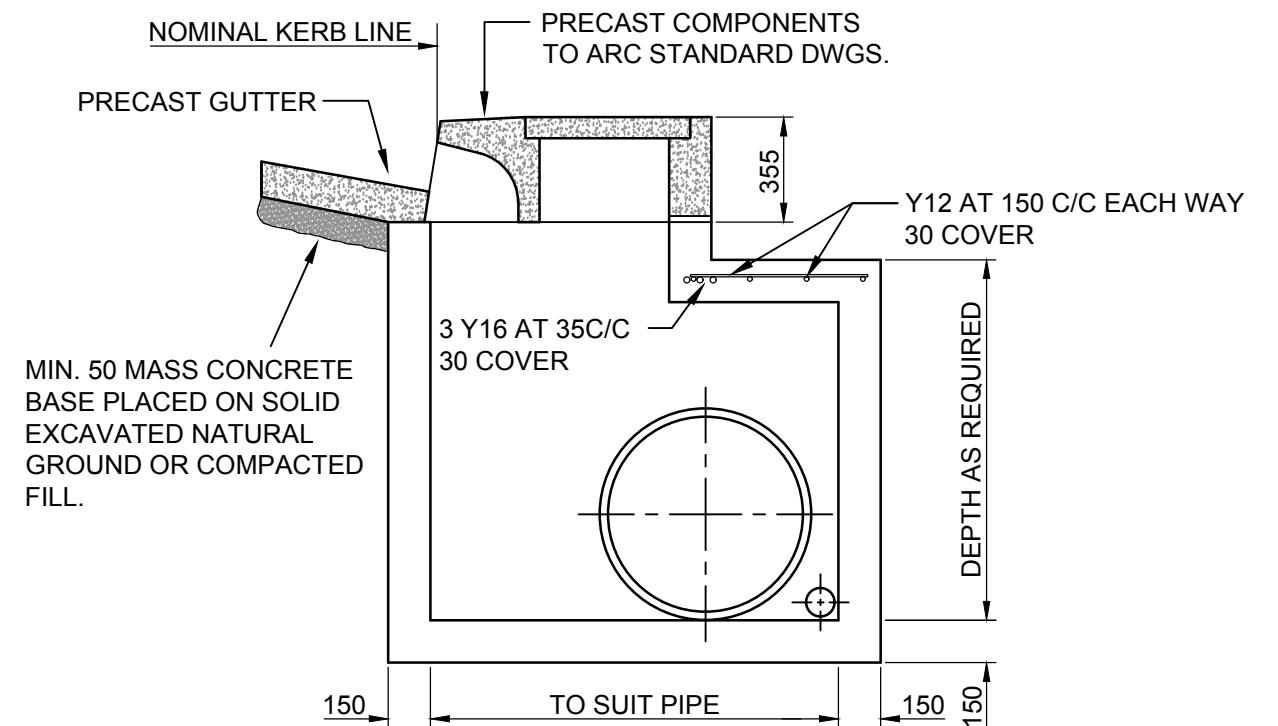


SECTION A-A



SECTION E-E

NOTES

1. COMPRESSIVE STRENGTH (F_c) FOR CAST IN SITU CONCRETE TO BE A MINIMUM OF 32MPa AT 28 DAYS.
2. PRECAST GUTTERS ARE MANUFACTURED FOR GUTTER FLOWS FROM LEFT OR RIGHT HAND DIRECTIONS.
3. 100 DIA. SUBSOIL DRAINAGE PIPE 3000 LONG WRAPPED IN A FABRIC SOCK TO BE PROVIDED ADJACENT TO INLET PIPES.
4. MULTIPLE LIDS MAY BE USED TO SUIT SITE OR TO INCREASE INLET CAPACITY.
5. PROVIDE SL92 MESH CENTRALLY PLACED TO WALLS AND BASE FOR PITS ≥ 1.5m DEEP PLUS Y12 STARTER BARS SPACED AT 150 C/C.
6. ALL STEELWORK SHALL BE HOT DIP GALVANISED IN ACCORDANCE WITH AS 1650.

Armidale <i>Dept of Public Infrastructure</i> Regional Council	SCALES	APPROVED	D. MAUNDER	31/08/2016	SHEET 2 OF 2
	NTS	MANAGER ENGINEERING AND STANDARDS SUPPORT		DATE	
REAR ACCESS GULLY PIT PIPES GREATER THAN Ø600 (RM5)		SURV	AS SHEET SIZE	DRAWING No	AMDT No
		DRWN	A3	080-031	
		DES			
		CHKD	CADFILE 080-031_2.dwg	DATE 31/08/2016	