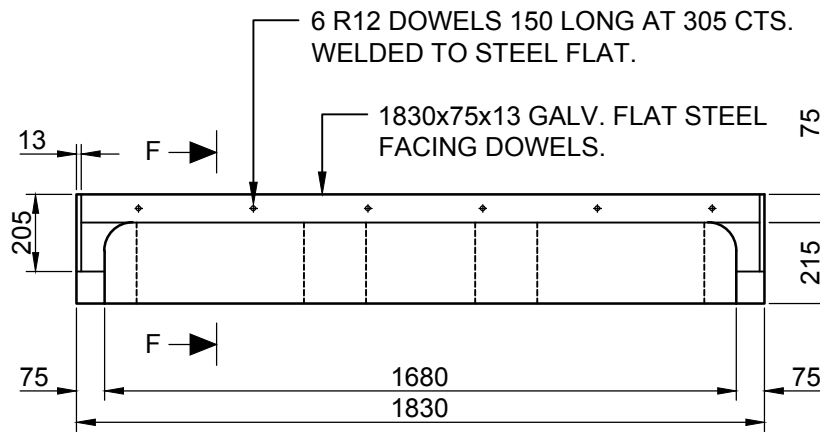
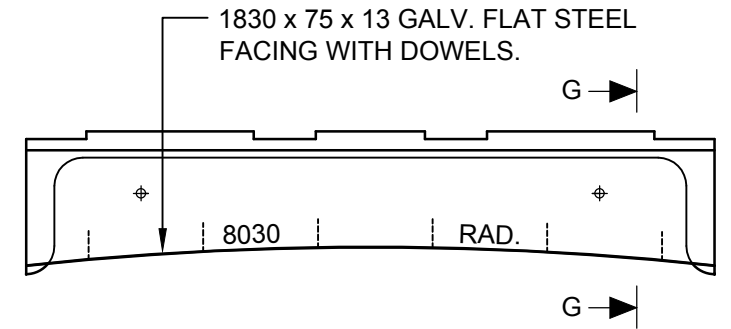


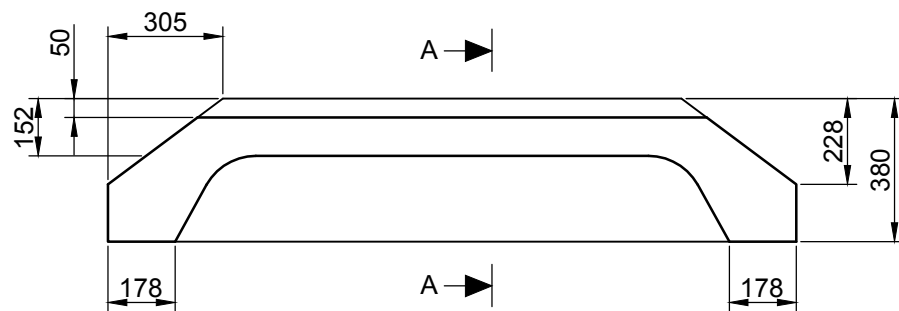
ELEVATION  
EXTENDED KERB INLET LINTEL



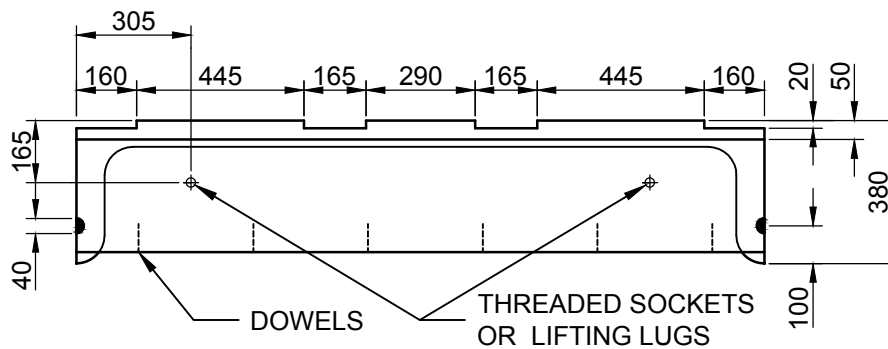
ELEVATION  
KERB INLET GULLY PIT LINTEL



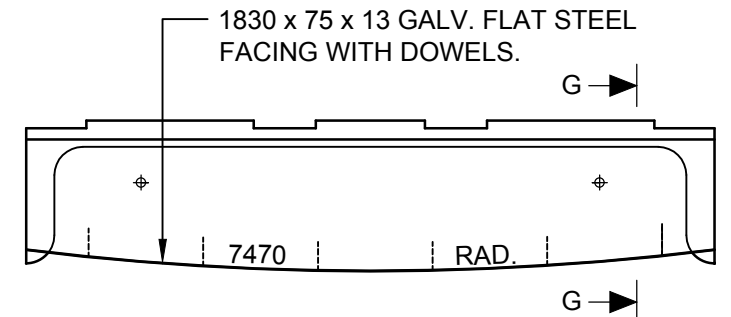
PLAN  
CONCAVE LINTEL



PLAN  
EXTENDED KERB INLET LINTEL



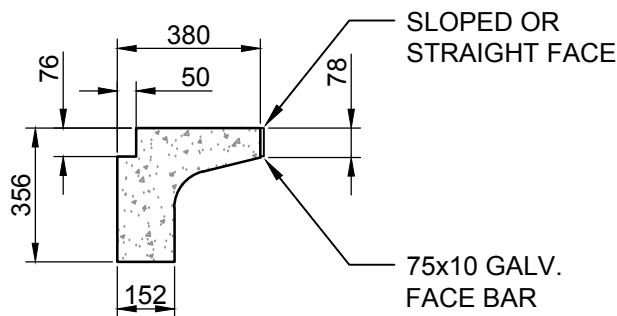
PLAN  
KERB INLET GULLY PIT LINTEL



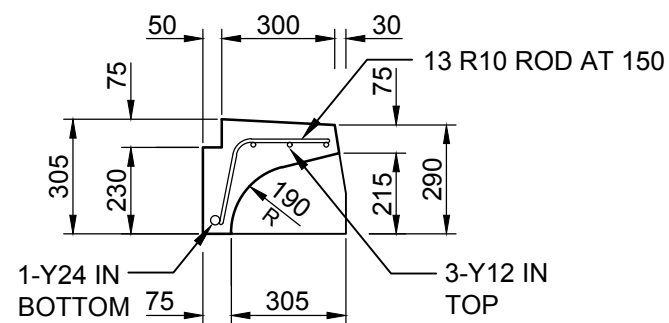
PLAN  
CONVEX LINTEL

A	B	WEIGHT
1800	2400	457kg
2400	3000	579kg
3000	3600	701kg

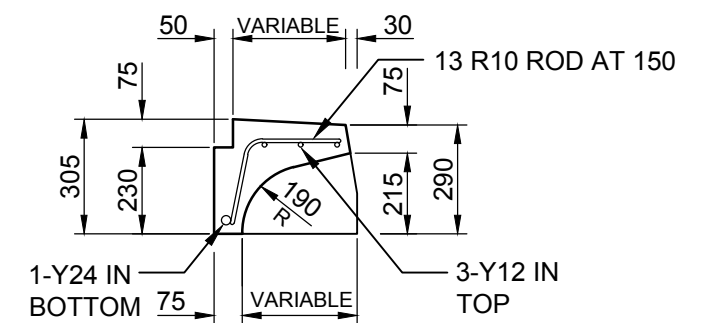
\* STANDARD SIZE  
CONCAVE / CONVEX UNITS  
8300 RADIUS ONLY.



SECTION A-A



SECTION F-F



SECTION G-G

NOTES

- ALL MEASUREMENTS ARE IN MILLIMETERS.
- ALL PRECAST COMPONENTS TO BE FACTORY PRODUCED OF VIBRATED CONCRETE AND STEAM CURED.
- COMPRESSIVE STRENGTH OF CONCRETE (F<sub>c</sub>) 30MPa AT 28 DAYS.
- ALL EXPOSED EDGES TO BE ROUNDED TO 5 RAD.
- PROVISIONS TO BE MADE FOR 15 DIA LIFTING HOOKS BY INSERTION OF THREADED SOCKETS INTO LINTEL AND SURROUND AT POINT OF BALANCE OR PROPRIETARY DESIGN.
- GALVANIZING TO BE IN ACCORDANCE WITH AUSTRALIAN STANDARD FOR ALL EXPOSED COMPONENTS.
- EXPOSED SURFACES TO BE OF STEEL FORM FINISH OR OF HIGH QUALITY STEEL FLOAT FINISH.

<b>Armidale</b> Dept of Public Regional Council Infrastructure	SCALES	APPROVED	D. MAUNDER	31/08/2016	SHEET 1 OF 1
	NTS	MANAGER ENGINEERING AND STANDARDS SUPPORT		DATE	
<b>PRECAST COMPONENTS FOR KERB INLET PIT LINTELS (RM4)</b>	SURV	AS SHEET SIZE	DRAWING No	AMDT No	
	DRWN JB	A3	080-028		
	DES				
	CHKD MW	CADFILE 080-028.dwg	DATE 31/08/2016		