

How to read your water meter

Reading your own meter can help you better understand your water usage.

Water meters are usually located at the front boundary of your property. Council encourages householders to read their meter at regular intervals to monitor water usage.

Council reads the meter four times a year (February, May, August & November) and bills for water usage are issued at the end of the following month.

Council's responsibility for water supply to your property ends at the water meter. This means that you are responsible for all water passing through the meter whether used or lost to leakage. Council recommends that you also do regular checks on your daily, weekly or monthly consumption of water at your meter.



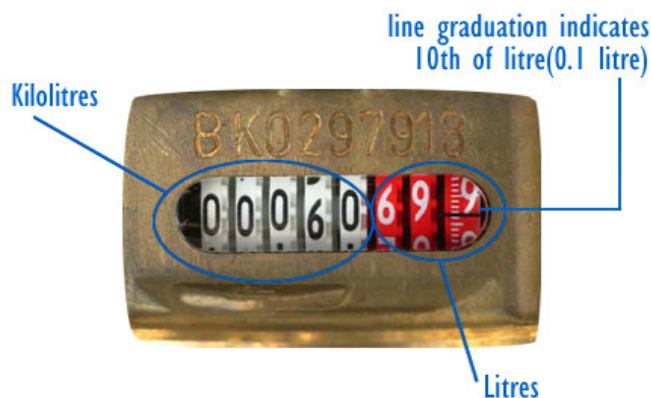
Reading your water meter

The row of black numbers show the kilolitres of water used

1 kilolitre = 1000 litres = 220 imperial gallons

The row of red numbers on barrel meters show the litres.

The numbers in black are used for billing
This meter reads 60.6986 Kilolitres



Water usage

You can either check your meter once a week or every day of the week. At the same time of day, record the reading on your meter and use one of the tables to work out how much water your household is using. It may be useful to check it once a day initially and then use the weekly table.

Daily water use

Use the daily water use table on the next page to see how your water usage differs each day, for example when you do all your washing one day or over the weekend. Record the reading of your meter at the same time every day for eight days to see how your usage changes. Remember to subtract the previous day's reading from the current day to work out your daily town water usage.

Weekly water use

Use the weekly water use table on the next page to measure your weekly water usage. Record your water meter reading for each week in the table. Then subtract the previous week's reading from the current week's reading to work out how much town water you have used during the week.

Checking for leaks

Reading your water meter is a great way to check for leaks within the pipe work on your property. Simply take a reading after the last person has used water for the night. Then take a second reading before anyone uses water in the morning. If no one has used any water overnight and the reading has changed, then you know there is a leak. If there is evidence of a leak you should contact a licenced plumber.

Water usage tables

Daily water use

Day	Time & Date	Reading	Calculated Usage
1			
2			Day 2 reading minus day 1 reading
3			Day 3 reading minus day 2 reading
4			Day 4 reading minus day 3 reading
5			Day 5 reading minus day 4 reading
6			Day 6 reading minus day 5 reading
7			Day 7 reading minus day 6 reading
8			Day 8 reading minus day 7 reading

Weekly water use

Day	Time & Date	Reading	Calculated Usage
1			
2			Week 2 reading minus week 1 reading
3			Week 3 reading minus week 2 reading
4			Week 4 reading minus week 3 reading
5			Week 5 reading minus week 4 reading
6			Week 6 reading minus week 5 reading
7			Week 7 reading minus week 6 reading
8			Week 8 reading minus week 7 reading

If you have trouble reading your water meter or for further information contact Council on 1300 136 833 or visit www.armidaleregional.nsw.gov.au