

A nighttime photograph of a street with several glowing streetlights. The scene is dark, with the lights creating a warm, orange glow. The street appears to be empty, and the background is slightly blurred.

# ARMIDALE DUMARESQ COUNCIL CRIME PREVENTION STRATEGY

**2014-2018**

ADDRESSING CRIME & ANTI SOCIAL BEHAVIOUR IN OUR  
COMMUNITY AND CREATING A SAFER COMMUNITY

Written and supported by the Armidale Dumaresq Council's Community Safety Committee

## PREFACE

"Armidale Dumaresq Council's Community Safety Committee is represented by a broad cross-section of professional and non-professional people in our community and puts a big emphasis on wide community consultation. I think that this holistic approach has helped us to have a more preventative, than curative, approach to community safety.

The Committee also has good representation from women's groups and members of the Committee have a zero tolerance approach towards domestic violence perpetrated against anyone, however, particularly against women and children.

Although the Committee has a core membership, it also offers the flexibility of encouraging attendance of people who have a positive message to deliver around community safety. Some of these people turn up regularly, whilst others may come and go, and we encourage both.

As an ongoing commitment we also encourage Aboriginal leaders to attend our meetings. These can be Elders, they might be the young fellows who run the Clontarf Foundation program or community liaison officers from the many government and non-government sectors in Armidale. All these people have knowledge of their own community, which is hugely important in giving the non-Aboriginal people on the committee some insight, understanding and tolerance of issues facing Aboriginal people in the Armidale Dumaresq local government area. There is also a good representation from youth services who can advise Council on issues concerning youth.

Also of significant importance is the willingness of our Police and PCYC to interact with a broad cross-section of our community, including our international students and our younger citizens. This really breaks down a lot of 'us and them' barriers and helps to keep a reasonable check on anti-social behaviour in our community. We are also well represented by Council officers, whether it in youth, aged care, facilities management or traffic management. Our local Magistrate has a standing invitation to attend our meetings.

The people involved with our Community Safety Committee want to ensure that our community is a safe and happy place in which to live. Although there will always be social problems, as a committee, we can 'drill down' to try to find causes and solutions. That we regularly get good attendance to the meetings is testament to the fact that we must be doing something right.

**Cr Rob Richardson**

**Chair, Armidale Dumaresq Community Safety Committee**

**20 May 2014**

## Contents

<b>PREFACE</b>	<b>2</b>
<b>1. INTRODUCTION</b>	<b>5</b>
1.1 NSW State Plan “NSW 2012 Making NSW Number One”	5
1.2 Armidale Dumaresq Council Community Strategic Plan	6
1.3 Armidale Dumaresq Demographics	7
1.4 Previous Crime Prevention Strategies	8
<b>2. DEVELOPMENT OF THE ARMIDALE DUMARESQ COUNCIL 2014-2018 CRIME PREVENTION PLAN</b>	<b>10</b>
2.1 Community Consultation	10
2.2 Survey results	11
2.3 Local Police Intelligence	11
2.4 NSW Bureau of Crime and Research Statistics	11
<b>3. CRIME PROFILE</b>	<b>12</b>
3.1 Local Crime Priorities	12
3.2 How the priority crimes categories were selected	14
3.3 Profile of Offenders	15
3.4 Situational analysis	17
3.5 Stakeholders	19
<b>4. ACTION PLANS &amp; IMPLEMENTATIONS</b>	<b>20</b>
<b>REFERENCES</b>	<b>32</b>

## **APPENDICES**

Appendix 1 Survey results

Appendix 2 Armidale Police Intelligence Data

Appendix 3 Armidale Police Juvenile Crime Data

Appendix 4 Armidale Police “hot spots” maps

Appendix 5 NSW Bureau of Crime Statistics and Research (BOCSAR Graphs 1 – 10 showing crime category trends over January 2012 to December 2013)

## **TABLES**

**Table 1 Comparative data over the past 4 years – April 2010 – April 2014 – providing evidence of the current Plan’s strategies**

**Table 2 Recorded incidents of selected offences in the Armidale Dumaresq Local Government Area  
Annual totals and 24 month trend from January 2012 to December 2013**

**Table 3 Number of incidents of selected offences recorded by NSW Police by premises type – Armidale Dumaresq LGA**

**Table 4 Proportion of incidents by offence type day of week and time of day**

## 1. INTRODUCTION

This will be Council's 4<sup>th</sup> Crime Prevention Plan. Council acknowledges that community safety is a whole of community concern and requires a coordinated approach to reducing crime and anti-social behaviour. This Plan will build on previous work carried out by Council and key stakeholders in strengthening community safety across the Armidale LGA.

Information provided by the Armidale Police, confirmed by the NSW Bureau of Crime Statistic and Research (BOCSAR), reveal that most crime committed in the Armidale LGA is opportunistic and the priority crime categories of concern are stealing; break and enters; malicious damage and domestic violence. These crime categories will be the focus of Action Plan attached to this Plan.

The implementation of the Plan will be the responsibility of the Armidale Dumaresq Council Community Safety Committee (ADCCSC) and relevant Council officers. Council has a strong and committed partnership with the Armidale Police and addressing crime prevention is not possible without such a positive relationship. The local Magistrate is a member of the ADCCSC and provides much needed advice on crime and crime prevention in Armidale. The ADCCSC meets monthly in Council and is chaired by a Councillor.

### 1.1 NSW State Plan "NSW 2012 Making NSW Number One"

The NSW State Plan "NSW 2012 Making NSW Number One" is a 10 year plan which sets out five strategies including Police and Justice which defines that:

- "The NSW Police Force, courts and corrective service play a vital role in protecting the community and ensuring that those who do not respect our laws are held accountable for their actions. The NSW Government will invest in key infrastructure and resources needed by the police and the justice system to effectively tackle anti-social behaviour, alcohol-related crime and other criminal activity. Through better engagement with the community and a focus on prevention and early intervention strategies, we will provide higher quality police and justice services to support the growth of safer, stronger communities".

Under the NSW State Plan there is a New England North West Regional Action Plan which focuses on growing and diversifying the economy, investing in regional and local infrastructure and improving education pathways for young people to provide a skilled workforce to support the growing economy. The communities of the region identified a vision which includes:

- A strong and diverse economy, with the growth of existing and emerging industries, supported by education and training opportunities to provide people with the skills that industry needs.
- A highly skilled and competitive workforce, with educational opportunities for local communities, Aboriginal people, young people and the disadvantaged to increase job prospects.

- Effective land use planning and management, balancing the needs of the community, industry and natural environment to meet growing population needs.
- A well connected region supported by regional infrastructure, to enhance accessibility for residents and facilitate the movement of freight to support industries for growth.
- Strong, safe and healthy communities with access to quality services, such as health, housing and policing.

## 1.2 Armidale Dumaresq Council Community Strategic Plan

The Council's Community Strategic Plan 2014-2029 establishes the community's goals and aspirations and guides Council's Operational Plan and associated key documents, like the 2014-2018 Crime Prevention Plan.

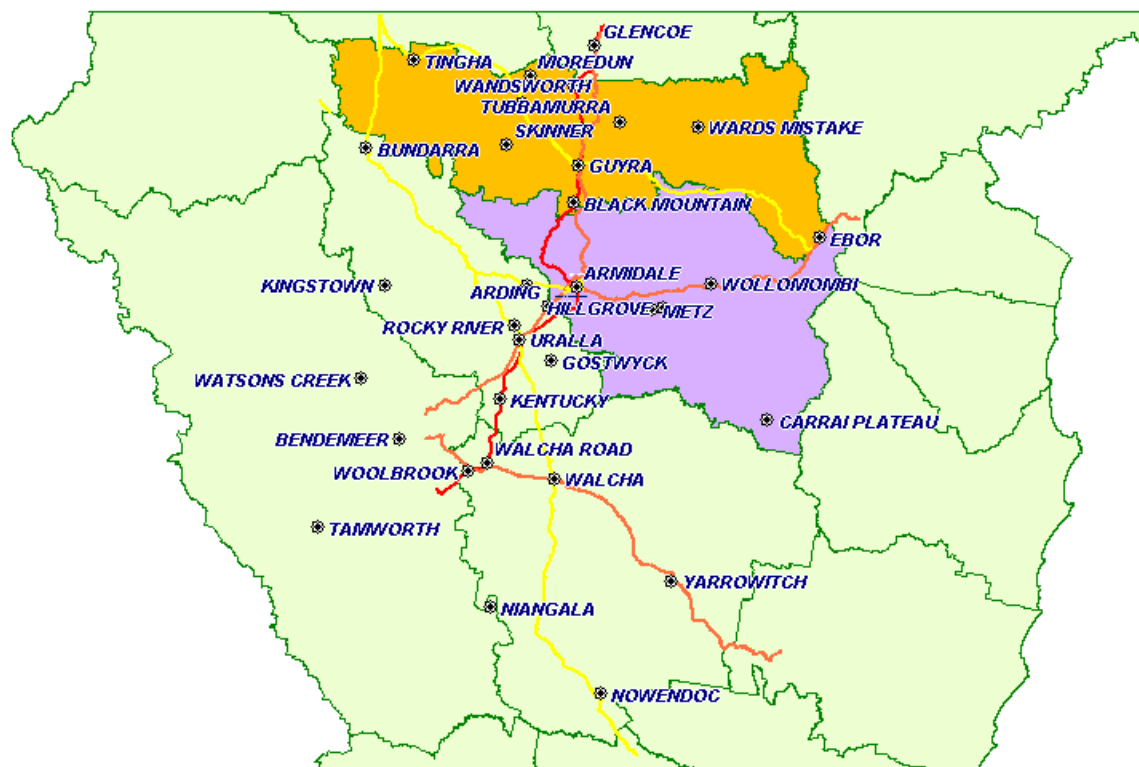
The Community Strategic Plan identifies a key strategic goal to "provide the community with a safe environment in which to work and live in" and has identified the following targeted outcomes:-

- Greater levels of respect and tolerance to our neighbours
- People looking after other people's property and welfare
- Better street lighting
- Reduced crime levels.

One of the strategic goals is for the Armidale Dumaresq Council Community Safety Committee to work with local law enforcement agencies to identify crime trends and put in place initiatives in the Crime Prevention Plan to reduce crime levels.

### 1.3 Armidale Dumaresq Demographics

In 2011, the Armidale Dumaresq LGA estimated a resident population of just over 25,000. From this, 12,590 are female (52.2%) and 11,515 are male (47.8%). Aboriginal and Torres Strait Islander people make up a total of 6.3% of the Armidale population. There is also a higher than the NSW state average of young people living in the Armidale LGA. Young people, aged between 15-29 years contribute 26.6% of the total population. There are 29 languages spoken within Armidale demonstrating a remarkably multicultural community.



## 1.4 Previous Crime Prevention Strategies

Action Plans in the previous 2010-2014 Crime Prevention Plan targeted the following offences:

- Steal
- Malicious Damage
- Break and enter – non dwelling & dwelling
- Assaults – DV related and DV non related

The following actions were taken to address these offences:

- Investigate re-establishing the Neighbourhood Watch Program
- Target hardening for repeat victims
- Build on existing CCTV system
- Improved lighting / Community Safety Audit
- Youth Strategy
- Alcohol Sub Committee
- Graffiti Vandalism / Public Art Initiative
- Crime Prevention through Environmental Design.

The outcome of these previous crime prevention strategies are as followed:

- The establishment of a Neighbourhood Watch Program was replaced with a quarterly publication through the Council newsletter of “Crime Prevention Tips” authored by the Armidale Police Crime Prevention Officer including the availability of home security packages and audits, and presentations to schools and community groups regarding community safety. Home security audits and presentations provided an awareness program aimed at target hardening and lessening the opportunity for crime;
- Council has extended its CCTV system and continues to seek external funding to update and maintain and extend the system;
- Council has updated its street lighting system and has a priority to replace and upgrade old infrastructure;
- A Youth Forum was held in 2010 and Council’s first Youth Strategy was developed. A Youth Forum is planned in 2014 to update the Youth Strategy;
- An Alcohol Sub committee was developed and now works in partnership with Council’s Planning Department and the Armidale and District Liquor Accord to review any new applications for liquor licenses and continues to support the Night Rider Late Night Bus Service, run by the University of New England (UNE).
- Council now has a Graffiti Management Policy and a Public Arts Policy and Implementation Plan. The Graffiti Management Plan outlines Council’s zero tolerance policy towards graffiti. The Public Arts Policy and Plan provides increased opportunities for legal public art works as a tool to support lowering the levels of graffiti and malicious damage in the community.
- All Council Planning Staff are trained in Crime Prevention through Environmental Design (CPTED) and attend relevant training when necessary.



Below is some comparative data looking at the crime categories identified in the 2010-2014 Crime Prevention Plan and where they stand today. There is also a state wide comparison on these identified crime categories.

**Table 1 Comparative data on crimes categories identified in the 2010– 2014 Crime Prevention Plan – Armidale - NSW. A**  
Annual totals and 48 month trend from April 2010 to March 2014 (per 100,000 populations)

Offence (rate)	April 2010 to Mar 2011	April 2011 to Mar 2012	April 2012 to Mar 2013	April 2013 to Mar 2014	Average percentage change
Assault – non DV - NSW	538.9	543.9	549.4	551.4	stable
Assault – non DV – Armidale	553.1	572.4	626.6	781.3	Up 12.2%
Assault – DV – NSW	361.9	372	380.9	541.1	Up 2.7%
Assault – DV – Armidale	475.7	560.8	611.1	638.2	Up 10.3%
Alcohol related assaults– NSW	406.8	379.2	354.3	343.6	Down 5.5%
Alcohol related assaults – Armidale	696.5	746.5	862.5	700.1	stable
Break and enter – dwelling – NSW	570.3	546.5	561.3	484.4	Down 5.2%
Break and enter – dwelling – Armidale	982.4	626.9	1102.3	986.3	Stable
Break and enter – non dwelling – NSW	236	236.1	225.3	201.6	Down 5.1%
Break and enter – no dwelling – Armidale	270.7	189.5	216.6	464.1	Stable
Malicious Damage – NSW	1266	1204.7	1144.1	1051.5	Down 6%
Malicious Damage – Armidale	1786.9	1427.2	1767.5	1589.6	stable
Steal from motor vehicle – NSW	619.2	666.9	651	618.9	stable
Steal from motor vehicle – Armidale	684.6	421.6	847.1	1407.9	Up 27.2%
Steal from retail store – NSW	283.5	287.5	304.5	300.5	Up 2%
Steal from retail store – Armidale	367.4	433.2	371.3	317.2	stable

## 2. DEVELOPMENT OF THE ARMIDALE DUMARESQ COUNCIL 2014-2018 CRIME PREVENTION PLAN

The Armidale Dumaresq Crime Prevention Plan has been developed using the guidelines and template provided by the NSW Attorney General's Crime Prevention Division.

### 2.1 Community Consultation

An important aspect of developing this Plan was consulting with the community. The consultation methods used in developing this Plan included a series of focus groups, individual interviews, service visits, presentations to interagency groups, the development and distribution of a survey which was available both electronically and in hard copy.

The aim of the focus groups was to elicit information regarding issues and concerns facing a range of groups in the community. The mix of focus groups included women's groups, youth groups, the aged, people living with a disability group, Aboriginal group and culturally and linguistically diverse (CALD) groups. The focus groups were informal and provided the opportunity for participants to express concerns about safety both personally and professionally, along with sharing ideas and innovations for change.

Presentations were made to a range of forums, groups and agencies within the community including:

- Armidale Interagency
- Armidale Youth Interagency
- Gayinyaga Aboriginal Advisory Committee
- Kent House Elders Group
- Armidale Community Care Meetings
- Armidale Disability Interagency
- Armidale & District Domestic Violence Committee
- Armidale & District Liquor Accord
- Attended the Armidale Youth Opportunities Expo
- Meeting with the NSW Attorney General's Circle Sentencing Coordinator (in Armidale)
- Meeting with the Local Magistrate
- Meeting with BackTrack Youth Services

- Meeting with the Department of Juvenile Justice officers
- Meeting with the Keep Them Safe Regional Coordinator
- Meeting with the Police and proprietors of local business in the Creeklands precinct
- Meetings with relevant Council officers responsible for Council owned and operated public facilities and street lighting.

## 2.2 Survey results

There were 309 surveys collated in total. The survey was available over an 8 week period and asked 13 questions relating to community safety and provided the opportunity to further comment on other issues of concern relating to community safety. Key concerns identified in the survey were youth on the streets at night, drugs in the community, poor street lighting, nosey neighbours and assaults – both DV and non DV related. (The results of the survey are attached as Appendix 1).

## 2.3 Local Police Intelligence

The Armidale Police are very supportive of Council's Crime Prevention Plan and are a key stakeholder in the development and implementation of the Plan.

The cooperation from the Armidale Police has provided to this Plan local policing statistics on what crimes are of concern to them, what crimes take up most of their policing time and the locations of where crime is most prevalent. Appendix 2 is a report from the Armidale Police identifying their crime category priorities. Appendix 3 is Juvenile Legal Actions – Armidale – from March 2012-March 2014. Appendix 4 is "hot spots maps" which has been provided by the Police. The first map shows the location of property crime in the urban areas of Armidale from April 2013 to March 2014. The second map shows crime events including assault, drug detection, resist/hinder/assault officer, robbery and street offence.

## 2.4 NSW Bureau of Crime and Research Statistics

Crime data obtained from the NSW Bureau of Crime Statistics and Research indicates four offences occurring most frequently in the Armidale LGA : stealing from motor vehicle; break and enter – dwelling and non dwelling; and assault, DV and non DV related ([http://www.bocsar.nsw.gov.au/bocsar/bocsar\\_crime\\_stats/bocsar\\_lgaexceltables.html](http://www.bocsar.nsw.gov.au/bocsar/bocsar_crime_stats/bocsar_lgaexceltables.html) ). (See Appendix 5).

### 3. CRIME PROFILE

Information gathered to develop a crime profile for the Armidale LGA has been provided by the NSW Bureau of Crime Statistics and Research. Local Police intelligence has been obtained to compare with the NSW statistics. The Crime Prevention Survey provides data from the community. There are strong links between what the NSW statistics reveal and what the Armidale Police identify as their priority crime categories.

#### 3.1 Local Crime Priorities

Local intelligence data was sought and provided by the Armidale Police. Council asked the Police to identify the crime categories which they consider a priority for the Armidale LGA. The following summarises this data. (See Appendix 2)

- Assault – alcohol related – Non Domestic Violence related
- Malicious damage
- Steal from Retail Store
- Steal from Motor Vehicle
- Break, Enter & Steal – non residential dwellings

Local intelligence on juvenile legal actions identifies – over a period March 2012 – February 2014 – the crime categories which they consider a priority as follows:

- Assault
- Stealing
- Traffic Offences
- Street Offences
- Malicious Damage

The NSW Bureau of Crime Statistics and Research provides a number of methods in which crime statistics can be reported. One way is by LGA ranking (with a population larger than 3000). According to BOCSAR there are 140 LGAs across NSW and the following shows offences most frequently committed in Armidale during the 48 months from January 2010 to December 2013.

These offences and rankings are as follows:

- Steal from Motor Vehicle (LGA Ranking 5/140)
- Break and enter - dwelling (LGA ranking 13/140)
- Assault – non domestic violence (LGA ranking 15/140)
- Assault – DV related (LGA ranking 23/140)
- Break and enter – non dwelling (LGA ranking 19/140)
- Steal from dwelling (LGA ranking 28/140)
- Steal from retail (LGA ranking 31/140)
- Malicious Damage (LGA ranking 30/140)
- Sexual Assault (LGA ranking 34/140)
- Robbery without a weapon (LGA ranking 45/140)

The following table provides more information about the above mentioned crime categories including an annual percentage change.

**Table 2** Recorded incidents of selected offences in the Armidale Dumaresq Local Government Area

Annual totals and 24 month trend from January 2012 to December 2013

Offence	Jan 2012 to Dec 2012	Jan 2013 to Dec 2013	24 month trend	Annual percentage change
Assault - domestic violence related	158	165	Stable	**
Assault - non-domestic violence related	218	205	Stable	**
Sexual assault	33	27	Stable	**
Robbery without a weapon	7	2	Not Calculated *	**
Break and enter – dwelling	285	255	Stable	**

Break and enter - non-dwelling	56	120	Stable	**
Steal from motor vehicle	226	364	Up	61.1%
Steal from retail store	96	82	Stable	**
Steal from dwelling	82	129	Up	57.3%
Malicious damage to property	457	411	Stable	**

[www.lawlink.nsw.gov.au](http://www.lawlink.nsw.gov.au)

### 3.2 How the priority crimes categories were selected

Council asked the Armidale Police to provide information about the crime categories that most concern them and that take up most of their policing resources. The following is a summary of the information provided to Council.

Crime statistics for a 12 month period ending August 2013:

- Assault – Non DV. The category is for all reported assaults that have an associated factor of alcohol ie the victim and / or the offender were affected by alcohol or it occurred within or after leaving a licensed premises. These incidents have occurred in a public place or licenced premise.
- Malicious Damage – This category is for all incidents of malicious damage which occurred in a public place.
- Steal from Retail Store – The incidents in this category are reported to Police usually on the detection of an offender by either staff or through CCTV.
- Steal from Motor Vehicle – The incidents reported in this category do not include motor vehicles stored at private premises. The offenders of this type of crime are very opportunistic and will often commit a number of offences prior to being identified or detected. Often the offenders are juveniles or young adults.
- Break, enter and steal – non residential dwellings. This category excludes any premises that are used as a residential location ie private home, motel and hotel.

These offences identified by Armidale Police are congruent with the NSW statistics and will be identified as the priority crime categories for this Plan.

Based on the crime data obtained for this Plan, the offences “*Steal from Retail Store*”, “*Malicious damage to property*”, “*Break Enter and Steal – non residential dwellings*”, “*Assault – alcohol related – non DV*”, “*Assault – DV related*”, “*Traffic Offences – Juvenile*” are priority offences and will form the basis of the Action Plan. It is anticipated that projects designed to address these offences will positively impact the incidence of *Steal from Motor Vehicle and Steal from Dwelling*.

### 3.3 Profile of Offenders

In 2013 the NSW recorded crime statistics for Armidale Dumaresq LGA indicated that of selected crimes recorded in this Plan, male offenders perpetrated 77% of the 476 total recorded incidents of crime. Of the total number of recorded incidents:

- 50% were males aged 10 – 19 years, with 41% of the total incidents aged 10 – 17 years
- 27% were males aged 20 – 29 years
- 12% were males aged 30 – 39 years
- 11% were males aged over 40 years.

The most frequently occurring offence for males aged 10 – 19 years was Steal from Motor Vehicle (75 incidents) followed by Malicious Damage to Property (28 incidents), followed by Assault – non domestic violence related (25 incidents).

The most frequently occurring offence for males 20 – 29 years was Assault –domestic violence related (24 incidents), followed by Assault – non domestic violence related (21 incidents), followed by Malicious Damage to Property (20 incidents).

The most frequently occurring offence for males 30 – 39 years was Assault – domestic violence related (20 incidents), followed by Malicious Damage to Property (10 incidents), followed by Assault – non domestic violence related (9 incidents).

The most frequently occurring offence for males over 40 years was Assault – domestic violence related (19 incidents); followed by Assault – non domestic violence related, followed by Malicious Damage to Property.

Female offenders contributed the following proportions of all recorded incidents of crime:

- 56% were females aged 10 – 19 years, with 49% to the total incidents aged 10 – 17 years
- 23% were females aged 20 – 29 years
- 13% were females aged 30 – 39 years
- 8% were females aged 40 years and over.

The most frequently occurring offence for females aged 10 – 19 years was Assault – non domestic violence related (20 incidents); followed by Malicious Damage to Property (16 incidents, followed by Steal from Retail Store (9 incidents).

The most frequently occurring offence for females aged 20 – 29 years was Steal from Retail Store (9 incidents), followed by Assault – non domestic violence related (8 incidents), followed by Assault – domestic violence related (4 incidents).

The most frequently occurring offence for females aged 30 – 39 was Steal from Retail Store (7 incidents), followed by Malicious Damage to Property and Assault - non domestic violence related and Assault domestic violence related (2 incidents for each category).

The most frequently occurring offence for females aged over 40 was Steal from Retail Store and Assault – non domestic violence related (3 incidents for each category), followed by Assault – domestic violence related (2 incidents).



### 3.4 Situational analysis

The following table provided by BOCSAR shows the location of crime within the Armidale LGA. [www.lawlink.nsw.gov.au](http://www.lawlink.nsw.gov.au)

**Table 3** Number of incidents of selected offences recorded by NSW Police by premises type

<i>Premises type</i>	<i>Assault - domestic violence related</i>	<i>Assault - non-domestic violence related</i>	<i>Sexual offences</i>	<i>Robbery</i>	<i>Break and enter non-dwelling</i>	<i>Motor vehicle theft</i>	<i>Steal from motor vehicle</i>	<i>Steal from person</i>	<i>Malicious damage to property</i>
Adult entertainment	0	0	0	0	0	0	0	0	0
Financial institution	0	0	0	0	0	0	0	0	0
Office	1	1	1	0	4	0	2	0	4
Personal services	1	1	0	0	10	0	1	0	4
Retail/wholesale	2	24	1	3	51	0	7	5	24
Carpark	2	6	1	0	1	6	54	0	22
Education	1	11	3	0	17	1	10	0	38
Health	3	1	0	0	8	0	4	0	2
Industrial	0	0	0	0	3	1	4	0	2
Law enforcement	0	3	0	0	0	0	0	0	13
Licensed premises	2	45	1	0	2	0	3	4	16
Marine transport	0	0	0	0	0	0	0	0	0
Outdoor/public place	15	60	5	5	1	7	88	4	62
Recreation	0	4	0	0	3	0	1	0	4
Religious	0	0	1	0	1	0	0	0	2
Residential	138	48	43	0	17	21	183	0	214
Rural industry	0	0	0	0	0	0	1	0	0
Public transport	0	0	0	0	1	0	5	1	3

The survey asked a question (Q6) : “are there certain locations you avoid?” 72.37% respondents said yes.

The most frequently identified locations were:

- Girraween at night
- East Armidale
- CBD at night
- The Visitors Information Centre Car park / Hungry Jacks at night
- Cycle ways
- Pubs on Friday and Saturday nights
- Centro car park / out the front of Centro
- UNE
- Showground
- Skate park
- Armidale Lookout

There were comments which included “areas which are not well lit”, “anywhere late at night”, “high crime areas” which make it hard to determine these actual locations.

**Table 4** Proportion of incidents by offence type day of week and time of day

NSW Recorded Crime Statistics 2013																												
Proportion of incidents by offence type, day of week and time* of day																												
Armidale Dumaresq Local Government Area																												
Offence type	Sunday				Monday				Tuesday				Wednesday				Thursday				Friday				Saturday			
	12-6am	6am-12pm	12-6pm	6pm-12am	12-6am	6am-12pm	12-6pm	6pm-12am	12-6am	6am-12pm	12-6pm	6pm-12am	12-6am	6am-12pm	12-6pm	6pm-12am	12-6am	6am-12pm	12-6pm	6pm-12am	12-6am	6am-12pm	12-6pm	6pm-12am	12-6am	6am-12pm	12-6pm	6pm-12am
Assault - domestic violence related	2.7	4.7	2.7	6.8	0.0	2.7	3.4	7.4	2.0	4.1	5.4	4.1	2.0	1.4	4.1	4.1	1.4	2.7	4.7	8.8	2.7	3.4	2.7	4.1	3.4	1.4	2.7	4.7
Assault - non-domestic violence related	10.9	1.0	3.1	0.5	0.5	2.1	2.6	0.5	1.0	0.5	3.6	2.1	0.0	2.6	10.9	3.6	1.6	1.0	6.2	4.7	5.2	1.0	3.1	5.2	13.5	1.0	4.7	7.3
Assault - alcohol related	15.7	1.3	0.7	2.0	0.7	1.3	0.7	3.3	2.0	0.7	0.7	3.9	0.7	0.0	0.7	3.3	2.0	1.3	2.6	6.5	9.2	1.3	2.0	7.8	20.3	0.7	1.3	7.8
Sexual assault	16.7	8.3	0.0	25.0	0.0	8.3	0.0	0.0	8.3	0.0	0.0	0.0	8.3	0.0	0.0	0.0	0.0	8.3	0.0	0.0	0.0	0.0	0.0	0.0	8.3	0.0	0.0	8.3
Robbery	0.0	0.0	0.0	0.0	0.0	0.0	11.1	0.0	11.1	0.0	0.0	11.1	0.0	0.0	11.1	22.2	0.0	0.0	0.0	0.0	0.0	11.1	0.0	0.0	0.0	0.0	0.0	22.2
Break and enter dwelling	5.8	3.6	4.3	2.9	0.7	1.4	2.2	8.7	2.9	1.4	7.2	6.5	1.4	3.6	0.7	4.3	3.6	1.4	4.3	5.1	2.9	1.4	2.2	6.5	2.2	0.7	5.8	5.8
Break and enter non-dwelling	5.2	0.0	1.7	12.1	8.6	1.7	0.0	1.7	10.3	0.0	0.0	6.9	10.3	3.4	1.7	1.7	3.4	0.0	1.7	10.3	1.7	1.7	0.0	1.7	6.9	0.0	0.0	6.9
Motor vehicle theft	4.3	0.0	4.3	0.0	0.0	4.3	0.0	0.0	4.3	4.3	8.7	4.3	0.0	0.0	0.0	4.3	8.7	0.0	4.3	0.0	4.3	4.3	4.3	4.3	8.7	8.7	8.7	4.3
Steal from motor vehicle	4.3	3.6	2.2	8.6	2.9	3.6	5.0	2.2	1.4	0.7	2.9	5.8	0.0	2.2	5.0	2.2	1.4	3.6	5.0	4.3	2.2	2.9	4.3	5.0	2.2	5.0	6.5	5.0
Steal from dwelling	2.3	0.0	9.3	4.7	2.3	0.0	4.7	4.7	0.0	4.7	7.0	2.3	7.0	9.3	2.3	7.0	0.0	7.0	2.3	4.7	0.0	0.0	4.7	0.0	0.0	4.7	4.7	4.7
Steal from person	7.7	0.0	7.7	0.0	0.0	0.0	0.0	0.0	0.0	7.7	23.1	0.0	0.0	0.0	7.7	7.7	0.0	0.0	0.0	7.7	0.0	0.0	7.7	15.4	0.0	7.7	0.0	0.0
Malicious damage to property	4.9	2.3	3.4	5.7	1.1	3.8	4.2	4.2	1.1	1.9	1.1	5.7	0.8	1.5	3.8	2.6	2.6	1.5	3.8	7.2	3.4	4.2	4.5	4.9	5.3	4.2	3.4	7.2

\* Criminal incidents are included in the counting period in which they occurred.

### 3.5 Stakeholders

There are a number of key stakeholders involved in implementing and delivering this Plan and lead agencies will be identified in each Action Plan. These include: the Armidale Police, local youth services, members of the Aboriginal community, members of the CALD community, state government agencies like the NSW Attorney General’s Department including the local Magistrates Office, the Department of Juvenile Justice, the Department of Families and Communities, Housing NSW, NSW Department of Education and Training, NSW Health, non-government support services and community groups.

## 4. ACTION PLANS & IMPLEMENTATIONS

### Action Plan 1

<b><u>Target Offence:</u></b>	Steal from motor vehicle /break enter steal – dwelling ( <i>According to Armidale Police offenders tend to be juveniles or young adults</i> )
<b><u>Project:</u></b>	Community Education – Target hardening. Investigate the development of “Lock It or Lose It” program in Armidale.
<b><u>Rationale:</u></b>	Armidale Dumaresq LGA experienced a 61.1% annual percentage change in recorded incidents in the 24 months January 2012 – December 2013. The project will educate residents to improve security measures to reduce the risk of their motor vehicle being a target.
<b><u>Objective:</u></b>	To reduce the opportunity to steal from motor vehicles
<b><u>Lead Agency and Partners:</u></b>	NSW Police will be the lead agency in partnership with Armidale Dumaresq Council Community Safety Committee.
<b><u>Expected Outcome:</u></b>	Increased understanding in the community about reducing opportunistic crime including investigating signage in Council carparks.

Action	Performance measures	Time frames	Funding required	Milestones
Establish a working group to identify target location and the development of the “Lock It or Lose It” Program in Armidale.	Group is established	August 2014	Existing Police & Council resources	Number of target locations identified.
Source materials and resources to provide awareness to the community.	Materials & resources are identified and made available	December 2014		Number of materials and resources located.
Promote the availability of materials and resources.	Press release and promotion completed	December 2014		Press release and promotion completed.
Monitor, review and evaluate	Baseline crime data of Steal from Motor Vehicle and number of incidents over a 12 month period.	August 2015		Data collected and report to the Community Safety Committee.

## Action Plan 2

**Target Offence:**

Youth at Risk - Assault – non DV, Steal / Malicious Damage (*According to Armidale Police offenders tend to be juveniles or young adults*)

**Project:**

Youth Engagement Program

**Rationale:**

The Armidale Police advise that the crimes juveniles and young adults commit in the Armidale Dumaresq LGA are assault, stealing and malicious damage and anti-social behaviour. The NSW statistics reveal that offences of this kind predominately take place in public places. The Youth Engagement Project will address youth on the streets late at night.

**Objective:**

To reduce the incidents of these crimes and anti-social behaviour occurring in the CBD, particularly around the Hungry Jacks and Centro precincts, by juveniles and young adults.

**Lead Agency and Partners:**

The Armidale Community Safety Committee has endorsed the formation of a working party to fully develop a Youth Engagement Program. Members of the working party will include ADC, the Police, the PCYC, local youth services and other nominated key stakeholders.

**Expected Outcome:**

Reduction of the number of youth on the streets on a Friday and Saturday night leading to a reduction in break enter and steal, assault – non DV, malicious damage and antic social behaviour incidents in the CBD.

Action	Performance measures	Time frames	Funding required	Milestones
Establish a working party to scope out the youth at risk concern.	A working party is established.	August 2014	Apply for Safer Community Compact funding from the NSW Attorney General's Crime Prevention Division.	Working party has met.
Engage with key stakeholders to draw up a Plan of Engagement and a Program for the Project.	A Plan of Engagement and Program is completed and presented to the Community Safety Committee.	September / October 2014	Apply for funding through the NSW Sport & Recreation Program.	A Plan of Engagement and Program is endorsed by the Community Safety Committee.
Funding applications are written and sent to relevant government agencies being the NSW Sport & Rec and the NSW Attorney General's Department.	Funding is approved	October 2014		Funds are received by ADC.
The Working Party engages with key stakeholders and commence rolling out the Program.	A meeting with key stakeholders is organised and a planning process is entered into to delivery the first part of the Program.	November 2014 and ongoing over the life of this Plan.		The first part of the Program is delivered.

### **Action Plan 3**

**Target Offence:**

Assault –DV related.

**Project:**

Health community, health relationships

**Rationale:**

The Armidale Dumaresq LGA ratio to NSW for recorded incidents per 100,000 populations for Assault – DV related – is 1.6 times greater for the period January 2013 to December 2013. (*Armidale being 638.2 and NSW being 391.2*). A program of 10 free family friendly monthly events held on Saturday mornings, or early evenings in summer months, in Civic Park with aim of getting women and families out of their home and meeting other members of the community. The events would be designed to encourage women and children to attend with the aim of getting women out of the home and attending community events in a non-threatening environment where they have the opportunity to meet and socialise other women and families. Local Women’s support services staff would attend and be on hand to talk to women about any concerns they may have. The Program would not advertise the attendance of support services. The program could potentially break down the barrier for many women who may feel isolated in their homes and provide them with the opportunity to socialise with other women in a non threatening public environment. The Program would also give women access to support services they may not otherwise be able to access.

**Objective:**

To increase reporting to Police with reduction in domestic violence as a consequence.

**Lead Agency and Partners:**

Women’s services, Police and ADC.

**Expected Outcome:**

For women to have access to information about healthy relationships and to empower them to make changes in their lives.



Action	Performance measures	Time frames	Funding required	Milestones
Develop a working party as a sub group of the Community Safety Committee	Members are invited to attend the first meeting of the working party and invited to participate in the Project.	August 2014	Nil	First meeting has taken place.
The working party works on developing a calendar of suitable and engaging events.	A calendar of events is developed and presented to the Community Safety Committee.	October 2014	\$5,000 per annum for events	First event is planned for
The working party meets monthly.	The working party plans and organises each monthly event.	November 2014	Part of the \$5,000	First event is held in Civic Park.

## Action Plan 4

<b><u>Target Offence:</u></b>	Assault –DV related.
<b><u>Project:</u></b>	The Armidale & District Domestic Violence Steering Committee
<b><u>Rationale:</u></b>	Local support services have formed a Domestic Violence Steering Committee to work cooperatively to raise awareness about domestic violence and to promote services available to women, men and families who are victims of domestic violence.
<b><u>Objective:</u></b>	Raise awareness about domestic violence and to promote local support services who can assist men and families who are victims of domestic violence.
<b><u>Lead Agency and Partners:</u></b>	Womens services.
<b><u>Expected Outcome:</u></b>	To maintain a local forum to discuss issues relating to domestic violence.

Action	Performance measures	Time frames	Funding required	Milestones
Council to participate in the Armidale Domestic Violence Steering Committee and report back to the Community Safety Committee.	The Domestic Violence Steering Committee meetings bi-monthly.	June 2014	\$1500 ( <i>this could be an allocation of funds from the existing annual Community Safety Committee budget</i> )	Meetings proceed bi-monthly starting in June 2014.

## Action Plan 5

**Target Offence:**

Malicious damage & anti-social behaviour

**Project:**

Improved Street Lighting Project *Essential Energy Luminaire Replacement Program \$300,000*

**Rationale:**

The Crime Prevention Survey results revealed that 53.82% (162 respondents) identified street lighting as “the most important activity Council should be working on to improve community safety”.

**Objective:**

To replace more than 1200 existing lights with new LED technology and to upgrade ageing infrastructure.

**Lead Agency and Partners:**

ADC and Essential Energy

**Expected Outcome:**

To upgrade existing lights with new technology and to prioritise upgrading ageing infrastructure. A program is currently in place to upgrade ageing infrastructure and awaiting agreement with supplier. New lighting technology will bring greater efficiencies and sustainability to street lighting.

Action	Performance measures	Time frames	Funding required	Milestones
An agreement is confirmed with Essential Energy to complete the replacement program.	An agreement is signed and a date secured.	2014/2015	\$300,000	A report is sent to the Community Safety Committee outlining the details of the agreement and dates the work will commence.
A program is developed to commence works.	A program is put in place.	2014/2015	TBA	The upgrade has commenced and a report is sent to the Community Safety Committee to identify priority works for 2014/2015.

## Action Plan 6

<b><u>Target Offence:</u></b>	Assaults – Alcohol related – Licensed Premises
<b><u>Project:</u></b>	Armidale & District Liquor Accord
<b><u>Rationale:</u></b>	To reduce the number of alcohol related incidents outside / inside a license premise
<b><u>Objective:</u></b>	To continue to work with the Armidale Liquor Accord to support local programs in licensed venues to reduce alcohol related crime.
<b><u>Lead Agency and Partners:</u></b>	Armidale & District Liquor Accord
<b><u>Expected Outcome:</u></b>	Reduced alcohol related incidents – licensed premises

Action	Performance measures	Time frames	Funding required	Milestones
To attended the Armidale Liquor Accord Meetings.	Meetings are attended.	The meetings are bi-monthly and a report is made back to the Community Safety Committee.	Nil	An annual report to Council outlining the number of alcohol related incidents – licenced premises. Compare data for each year.

## Action Plan 7

<b><u>Target Offence:</u></b>	Alcohol and drug related offences
<b><u>Project:</u></b>	Armidale Community Drug Action Team (CDAT)
<b><u>Rationale:</u></b>	To reduce the number of alcohol and drug related offences.
<b><u>Objective:</u></b>	To continue to work with the Armidale Community Drug Action Team to support local education programs.
<b><u>Lead Agency and Partners:</u></b>	Armidale Community Action Team, ADC, Police, NSW Health and other key stakeholders
<b><u>Expected Outcome:</u></b>	Increase the awareness of the effects of drugs and alcohol by increasing educational programs.

Action	Performance measures	Time frames	Funding required	Milestones
To attend the Armidale Community Drug Action Team Meetings.	Meetings are attended.	The meetings are bi-monthly held at the Armidale Police Station and a report is made back to the Community Safety Committee.	Nil	An annual report to Council outlining the number of alcohol and drug related incidents and the number of increased education programs in Armidale over a 12 month period.

## Action Plan 8

<b><u>Target Offence:</u></b>	Assaults – Alcohol related – non commercial
<b><u>Project:</u></b>	Armidale Alcohol Free Zones
<b><u>Rationale:</u></b>	To reduce the incidents of alcohol related assaults in public places
<b><u>Objective:</u></b>	To work with the Armidale Police to review the Alcohol Free Zones and extend the zoned areas when required.
<b><u>Lead Agency and Partners:</u></b>	Armidale Police & Armidale Dumaresq Council
<b><u>Expected Outcome:</u></b>	Reduced alcohol related incidents – non commercial

Action	Performance measures	Time frames	Funding required	Milestones
To liaise with the Armidale Police and other key stakeholders regarding current Alcohol Free Zoned areas.	A meeting takes place and a review is underway.	Alcohol Free Zones are reviewed every new Council term – every 4 years. The next review is scheduled for 2016.	Funding to update signage.	A report is sent to Council outlining an extension of the zoned areas.

## Action Plan 9

<b><u>Target Offence:</u></b>	Break & enter dwelling
<b><u>Project:</u></b>	Promotion of Armidale Eyewatch
<b><u>Rationale:</u></b>	Increase surveillance of neighbourhood and reporting of suspicious behaviour
<b><u>Objective:</u></b>	To reduce the incidence of crime, anti-social behaviour and fear by : (a) increase community awareness of crime risk, and prevention strategies; (b) encourage community involvement in local community safety; (c) identify real and potential community safety problems.
<b><u>Lead Agency and Partners:</u></b>	Armidale Police, Housing NSW and community groups.
<b><u>Expected Outcome:</u></b>	Increased reporting to Police with reduction in break and enters – dwelling as a consequence.

Action	Performance measures	Time frames	Funding required	Milestones
The Armidale Police rolls out and promotes Armidale Eyewatch.	Collection of data relating to the operation. Monitor six monthly crime data trends.	August 2014. Six monthly reviews thereafter.	Nil	A report is sent to Community Safety Committee outlining the results.

## REFERENCES

NSW State Plan “NSW 2012 – A Plan to Make NSW Number One”

Armidale Dumaresq Council Community Strategic Plan

ABS 2011 Census Data

NSW Department of Crime Statistics and Research: [http://www.bocsar.nsw.gov.au/bocsar/bocsar\\_crime\\_stats/bocsar\\_lgaexceltables.html](http://www.bocsar.nsw.gov.au/bocsar/bocsar_crime_stats/bocsar_lgaexceltables.html)

### Appendices

Appendix 1 Survey results

Appendix 2 Armidale Police Intelligence Data

Appendix 3 Armidale Police Juvenile Crime Data

Appendix 4 Armidale Police “hot spots” maps

Appendix 5 NSW Bureau of Crime Statistics and Research (BOCSAR Graphs 1 – 10 showing crime category trends over January 2012 to December 2013)

### Tables

**Table 1 Comparative data over the past 4 years – April 2010 – April 2014.**

**Table 2 Recorded incidents of selected offences in the Armidale Dumaresq Local Government Area  
Annual totals and 24 month trend from January 2012 to December 2013**

**Table 3 Number of incidents of selected offences recorded by NSW Police by premises type – Armidale Dumaresq LGA.**

**Table 4 Proportion of incidents by offence type day of week and time of day**