

Kempsey to Armidale Road Recovery

PROJECT NEWSLETTER - July 2023

www.armidaleregionalcouncil.nsw.gov.au/kempseyroad



Where are we at?

Preparations are well underway for the early works stage of the project. This has included:

- Further geotechnical investigations
- Gathering flood level information
- Assessing possible locations for site facilities for the main recovery works including flora and fauna, Aboriginal heritage and environmental investigations
- Working out the scope of physical early works
- Assessment of unstable downslopes and upslopes including monitoring of rock falls.

The Early Contractor Involvement (ECI) phase is an essential part of many large government-funded construction projects. This is when all the necessary preparation is done in the lead-up to the start of the main recovery works.

This includes:

- Working on detailed design
- Finalising costs
- Determining the scope of all works to complete the project
- Working out what resources will be needed
- Preparing the project work schedules/program
- Working out what early works need to be done before the main construction works can begin
- Preparing and signing off on various deeds and contractual documents before any early works can be carried out.

It also includes seeking feedback from the community and keeping all stakeholders affected by the project informed, as the various aspects of the project are developed and finalised.

The project team meets on a regular basis with representatives of Seymour Whyte Constructions, Transport for NSW and Council to ensure that all the works will meet the funding requirements.

The project is funded from three separate sources with each having its own conditions and timelines which must be met under the funding agreements.

This process is complex, involves a number of project partners including government agencies and takes time to work through.



Early works

These works typically are for:

- Site facilities establishment (ancillary sites)
- Materials purchase and may include
- Construction of temporary passing bays
- Vegetation clearing
- Upslope scaling and some downslope works for high risk sites.

Early works are the essential works which need to be done to enable the main construction works to begin.

Project stages

Emergency Recovery Works	
Early Contractor Involvement Contract awarded	
Early Contractor Involvement Phase	◀ We are here
Early Works Contract awarded	
Early Works	
Main Recovery Works Contract awarded	
Main Recovery Works - forecast to start in 2024	

Work Health and Safety Manager

Council has appointed a Work Health and Safety (WHS) Manager for the Kempsey to Armidale Road Recovery Program.

Their role will be primarily to ensure the safety of motorists and workers in the lead up to and during all construction works.

They will also make sure that all works and road conditions comply with the project's Work Health and Safety Management Plan which is currently being developed.

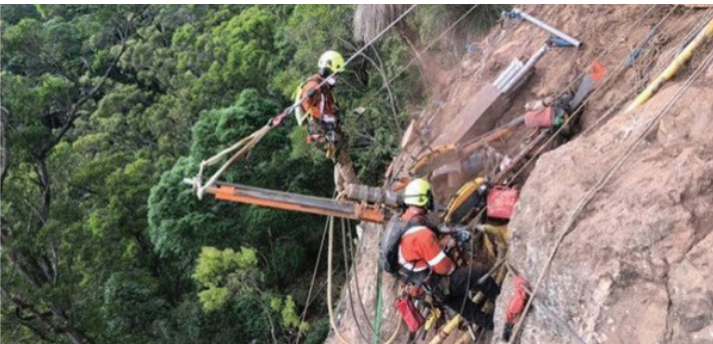
Some key activities

There are a number of investigations which have been underway for some time now. Of these, considerable attention is being given to the stability of upslopes and downslopes along the project alignment.

Monitoring of rockfalls has recently begun to build up a better understanding of the extent and frequency of these events. This information will help to identify locations for planned "upslope rock trials", soon to be undertaken.

These activities are essential to determine exactly what upslope and downslope treatments will need to be carried out prior to substantial works starting. This is to ensure the safety of all motorists and workers travelling the road and workers onsite.

Slope stabilisation works will include the construction of soil nail walls and gravity walls. It also can involve re-shaping of the slope and the removal of loose rocks and material to enable these walls to be built safely.



Difficult to access locations often require drilling to be done manually.

Community Hall at Lower Creek

Council has appointed an officer to progress the construction of the planned Lower Creek Community Hall. They will be liaising with the community as the details and design for this new community facility are developed.

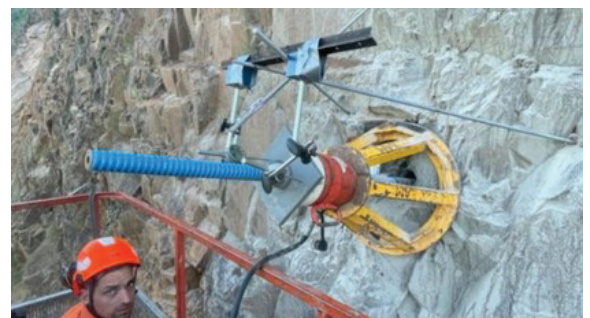
At present, site locations are being looked at to enable design to be progressed.



Loose rocks being dislodged.



A typical gravity wall.



Soil nails are long steel rods which are inserted into the rock to anchor the mesh and shotcrete which is applied to stabilise the slope.

How to find out more about the project

Further project information, including weekly updates, can be viewed on the Armidale Regional Council website:

www.armidaleregional.nsw.gov.au/kempsey-road

or you can call the project freecall line on:

1300 136 833 and press menu **option 1** to speak to the project's Communications Manager